

1 μm

Mag = 13.00 K X

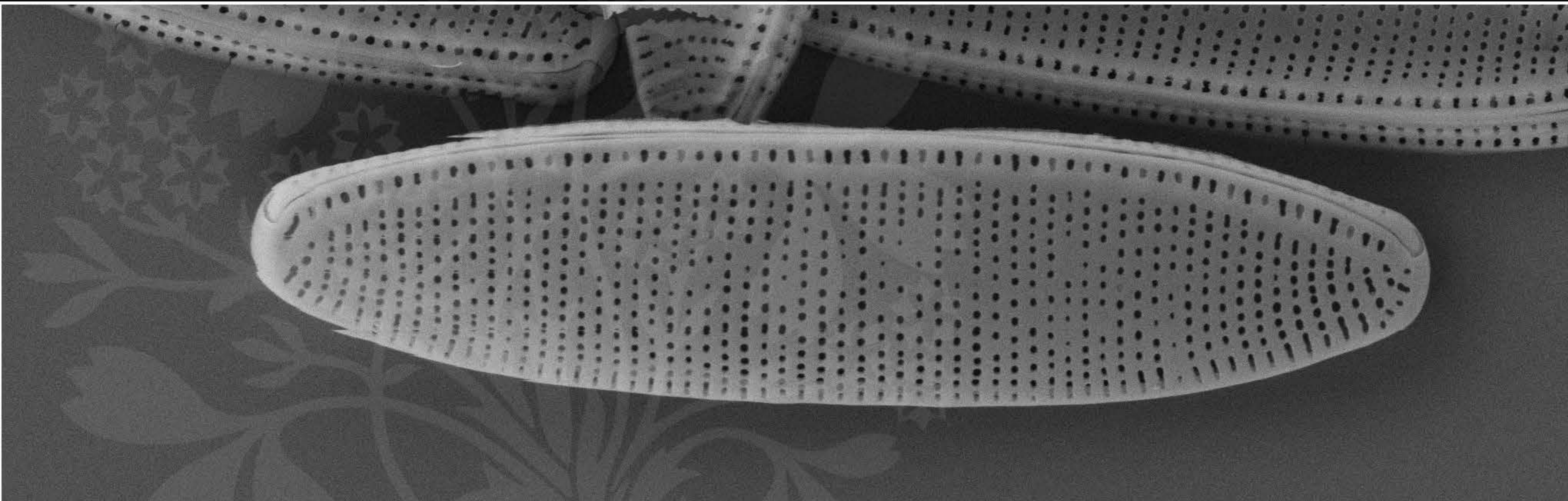
EHT = 5.00 kV

Signal A = SE2 Date :8 Jun 2017

WD = 4.3 mm

File Name = TCC896_01.tif





1 μm

Mag = 13.00 K X

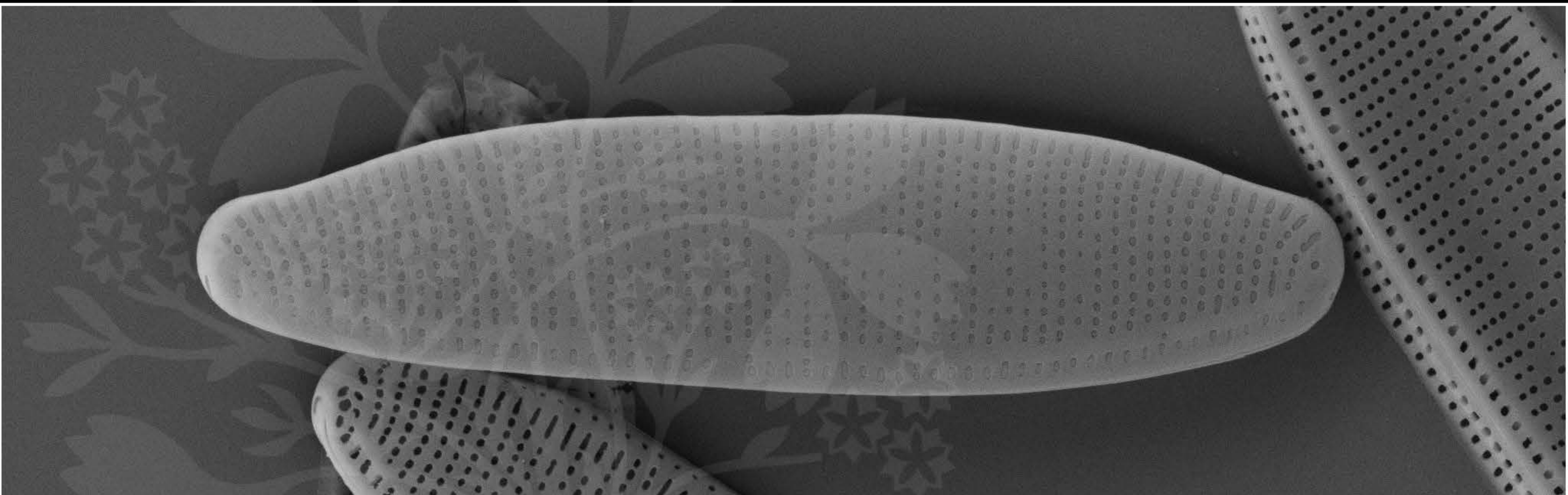
EHT = 5.00 kV

Signal A = SE2 Date :8 Jun 2017

WD = 4.3 mm

File Name = TCC896_02.tif





1 μm

Mag = 13.00 K X

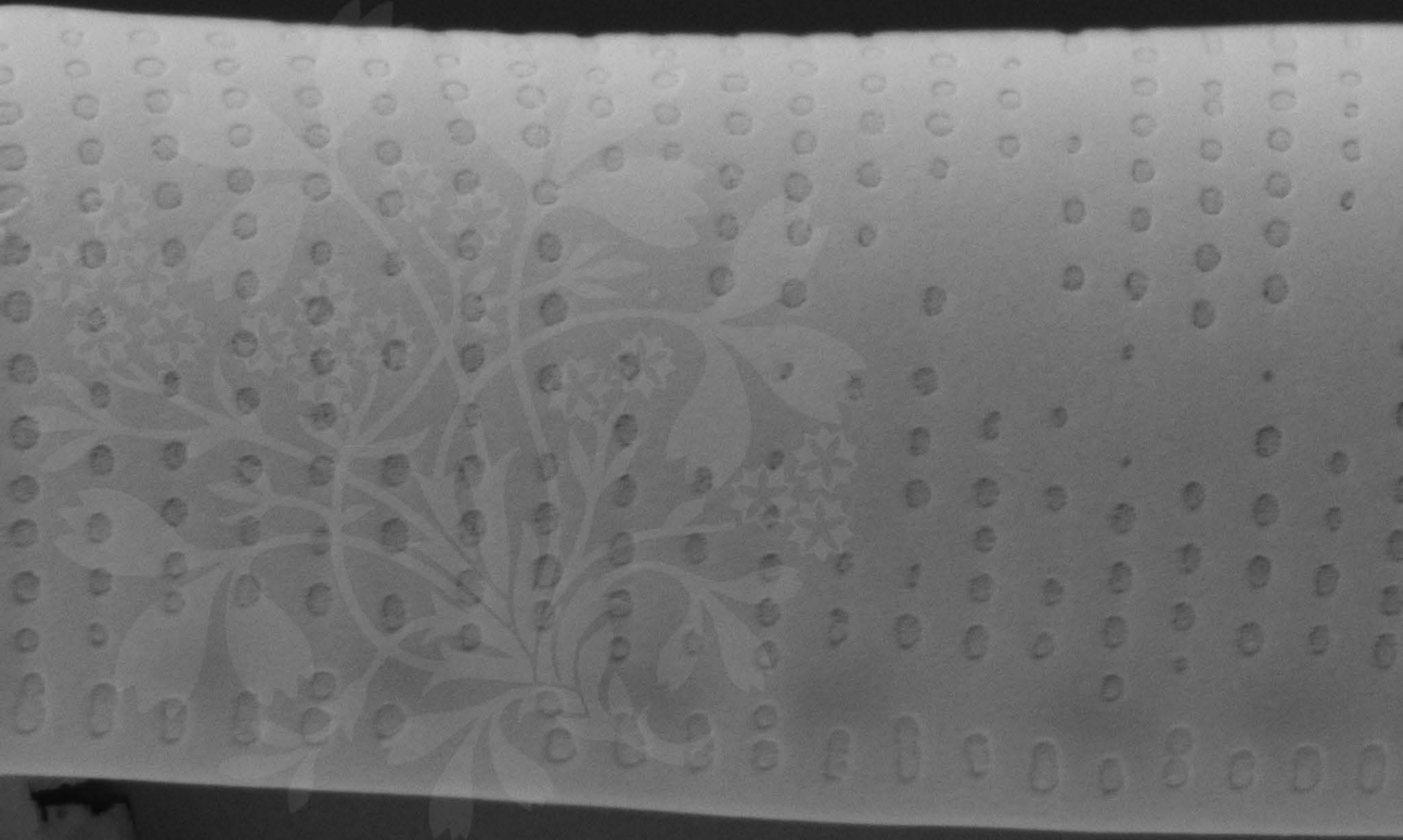
EHT = 5.00 kV

Signal A = SE2 Date :8 Jun 2017

WD = 4.3 mm

File Name = TCC896_03.tif





300 nm

Mag = 55.73 K X

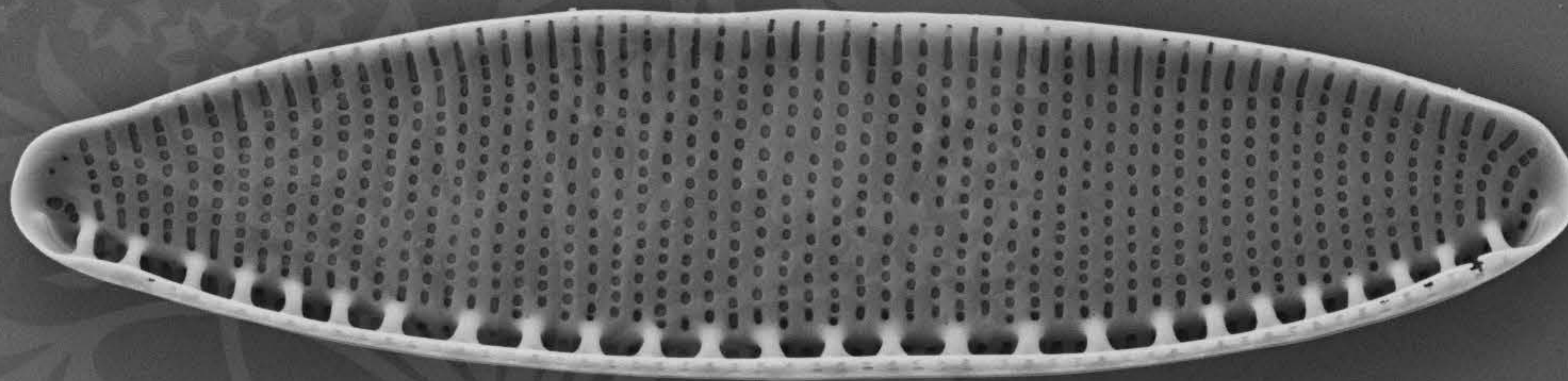
EHT = 5.00 kV

Signal A = SE2 Date :8 Jun 2017

WD = 4.3 mm

File Name = TCC896_04.tif





1 μm

Mag = 12.00 K X

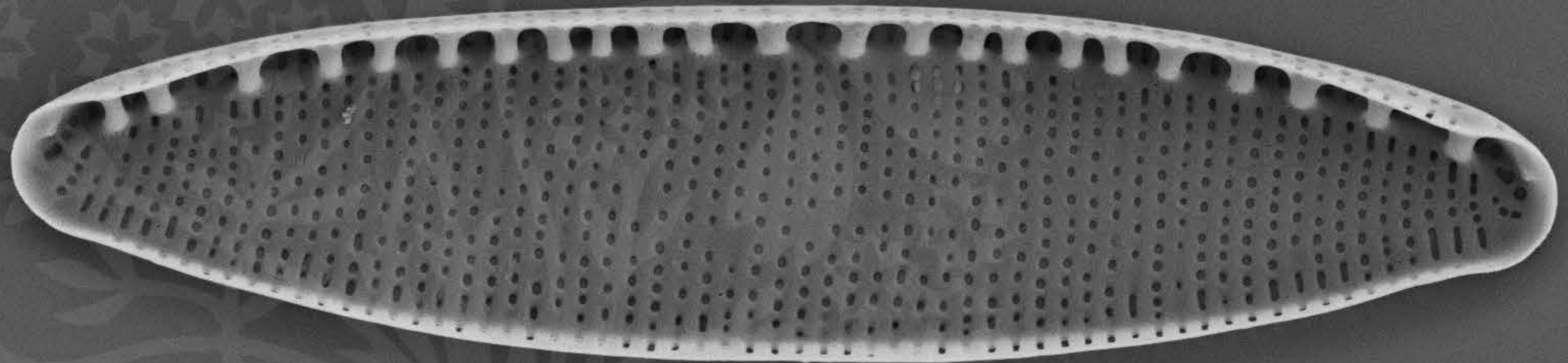
EHT = 4.00 kV

Signal A = SE2 Date :28 Sep 2017

WD = 5.3 mm

File Name = TCC896_05.tif





1 μm

Mag = 12.00 K X

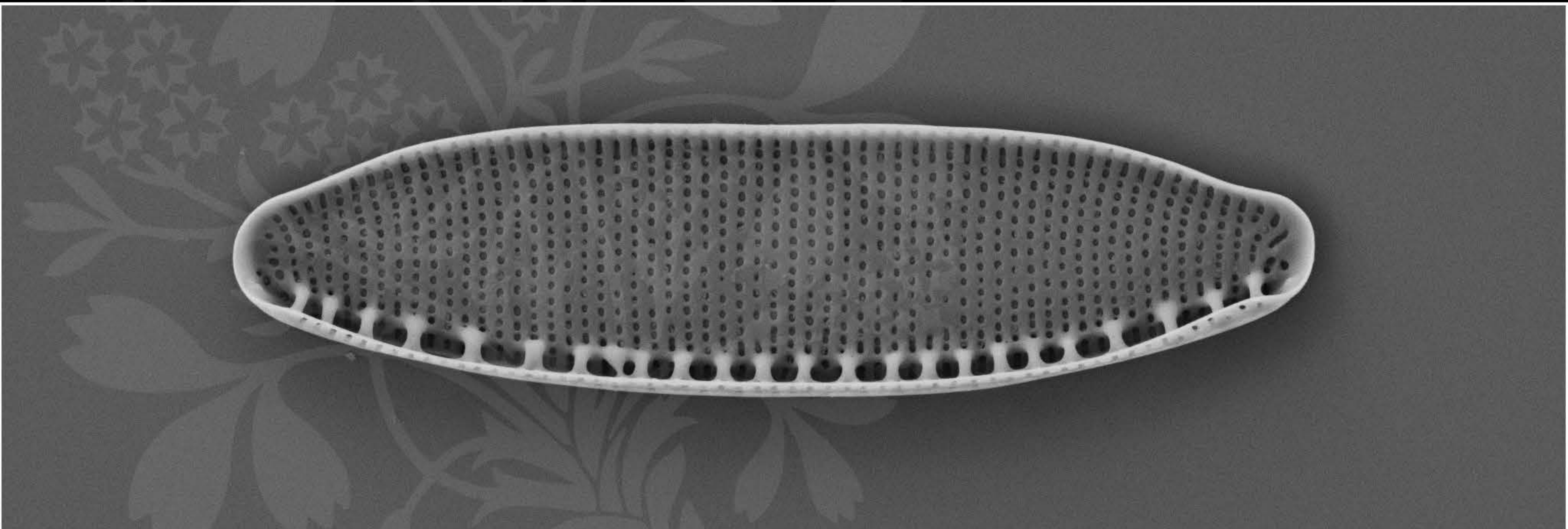
EHT = 4.00 kV

Signal A = SE2 Date :28 Sep 2017

WD = 5.3 mm

File Name = TCC896_06.tif





1 μm

Mag = 12.00 K X

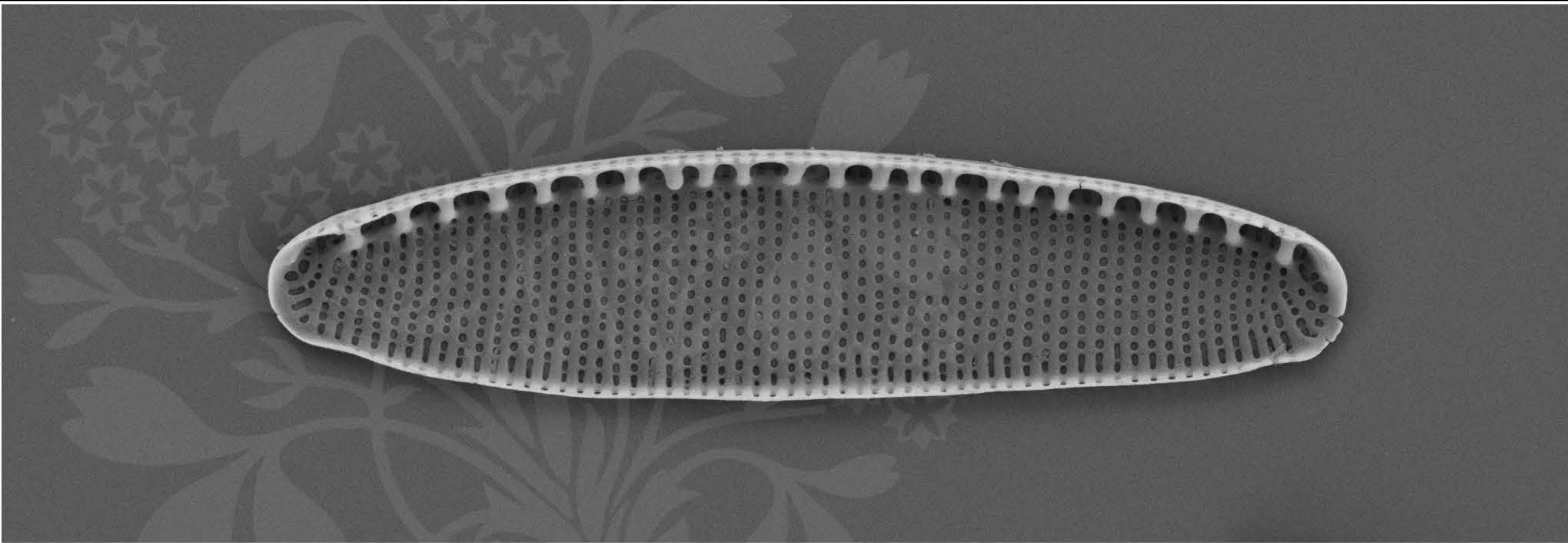
EHT = 4.00 kV

Signal A = SE2 Date :28 Sep 2017

WD = 5.3 mm

File Name = TCC896_07.tif





1 μm

Mag = 12.00 K X

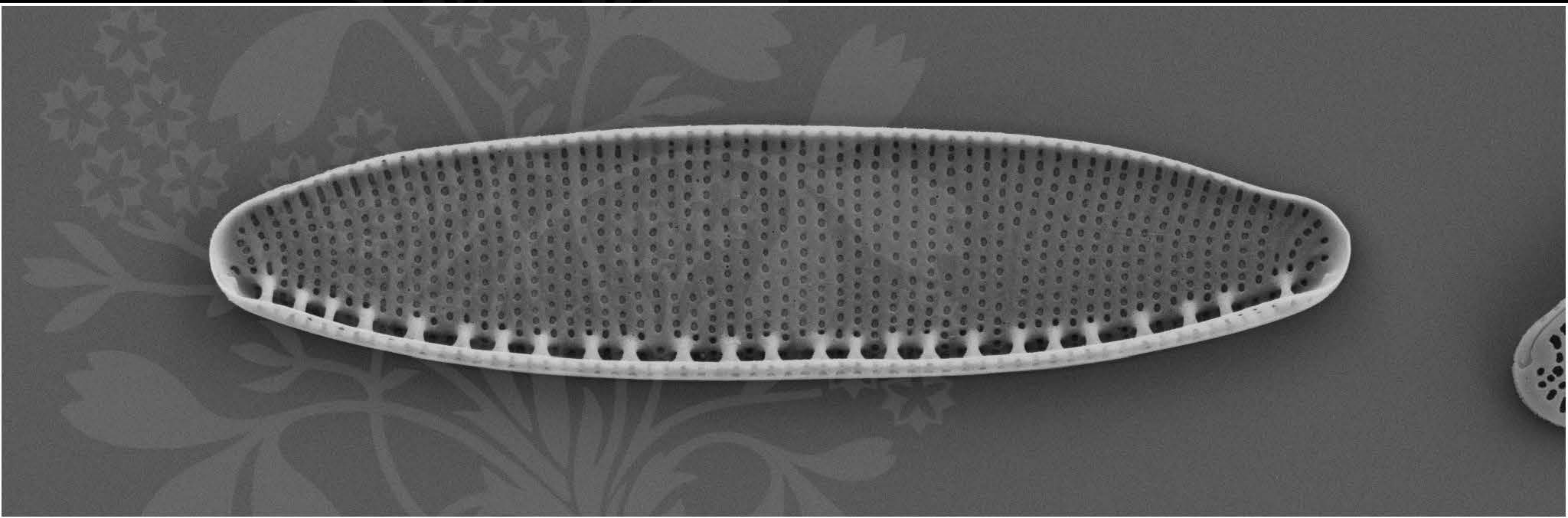
EHT = 4.00 kV

Signal A = SE2 Date :28 Sep 2017

WD = 5.3 mm

File Name = TCC896_08.tif





1 μm

Mag = 12.00 K X

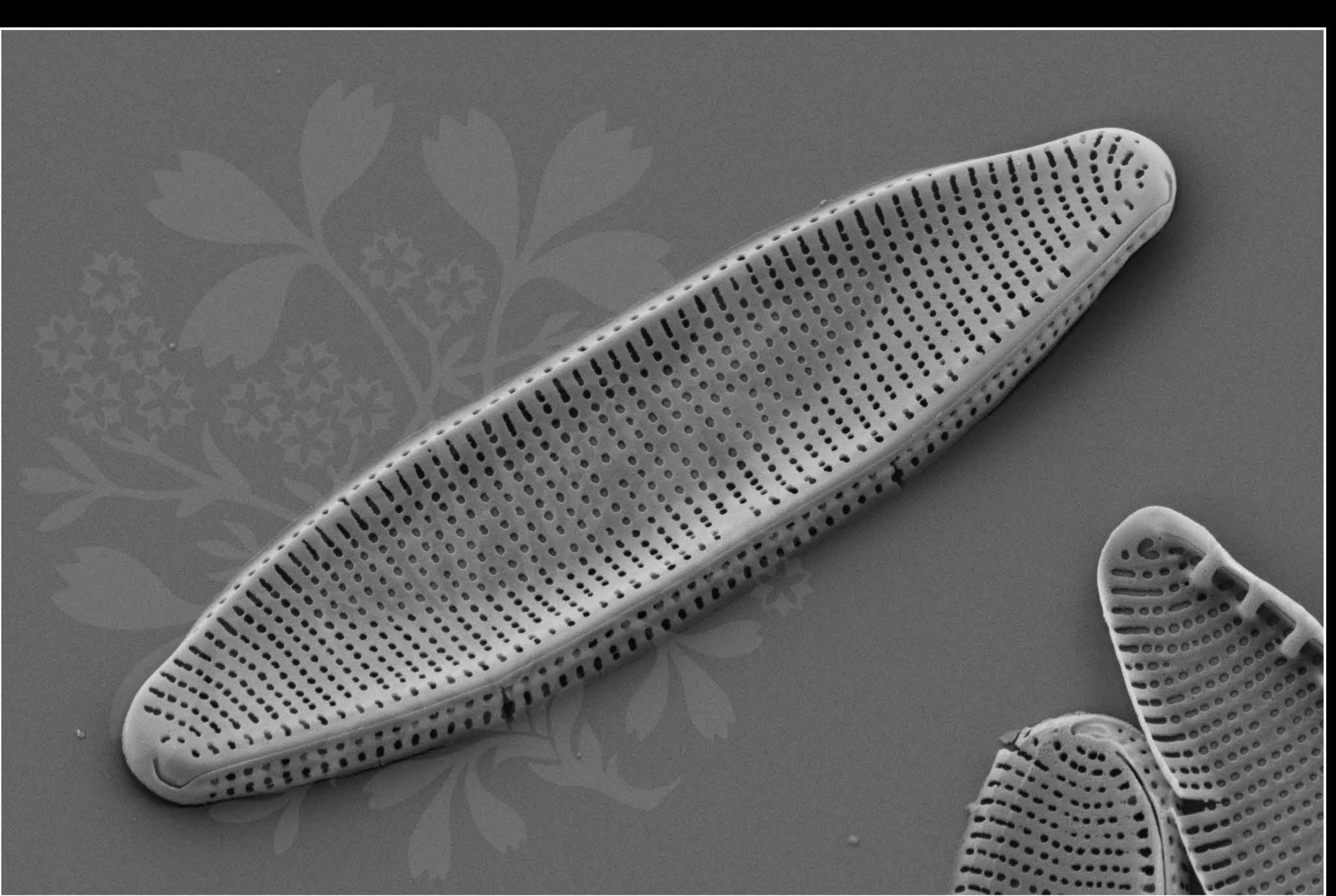
EHT = 4.00 kV

Signal A = SE2 Date :28 Sep 2017

WD = 5.3 mm

File Name = TCC896_09.tif





1 μm

Mag = 16.00 K X

EHT = 4.00 kV

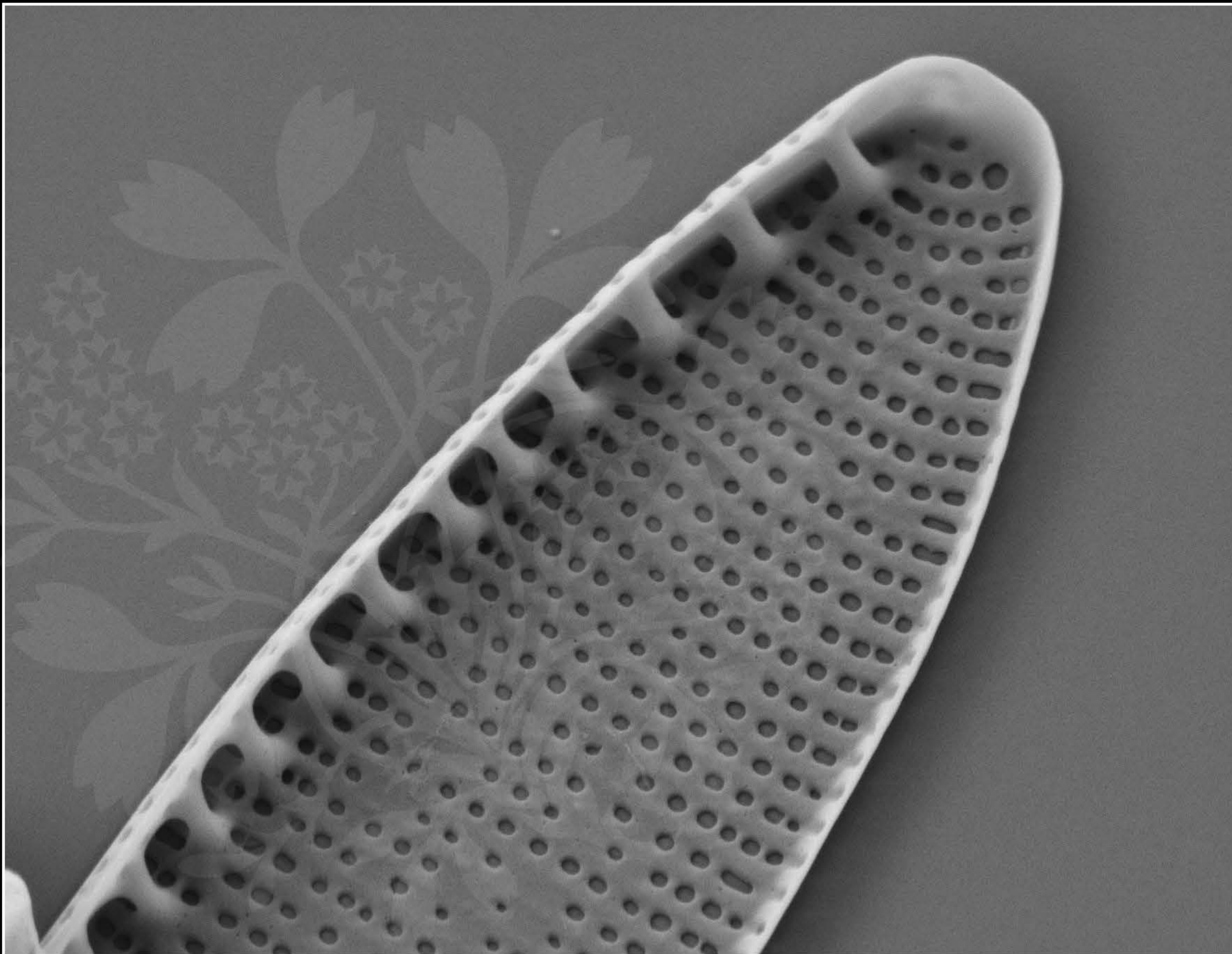
Signal A = SE2

Date :28 Sep 2017

WD = 5.2 mm

File Name = TCC896_10.tif





200 nm
└─┘

Mag = 30.00 K X

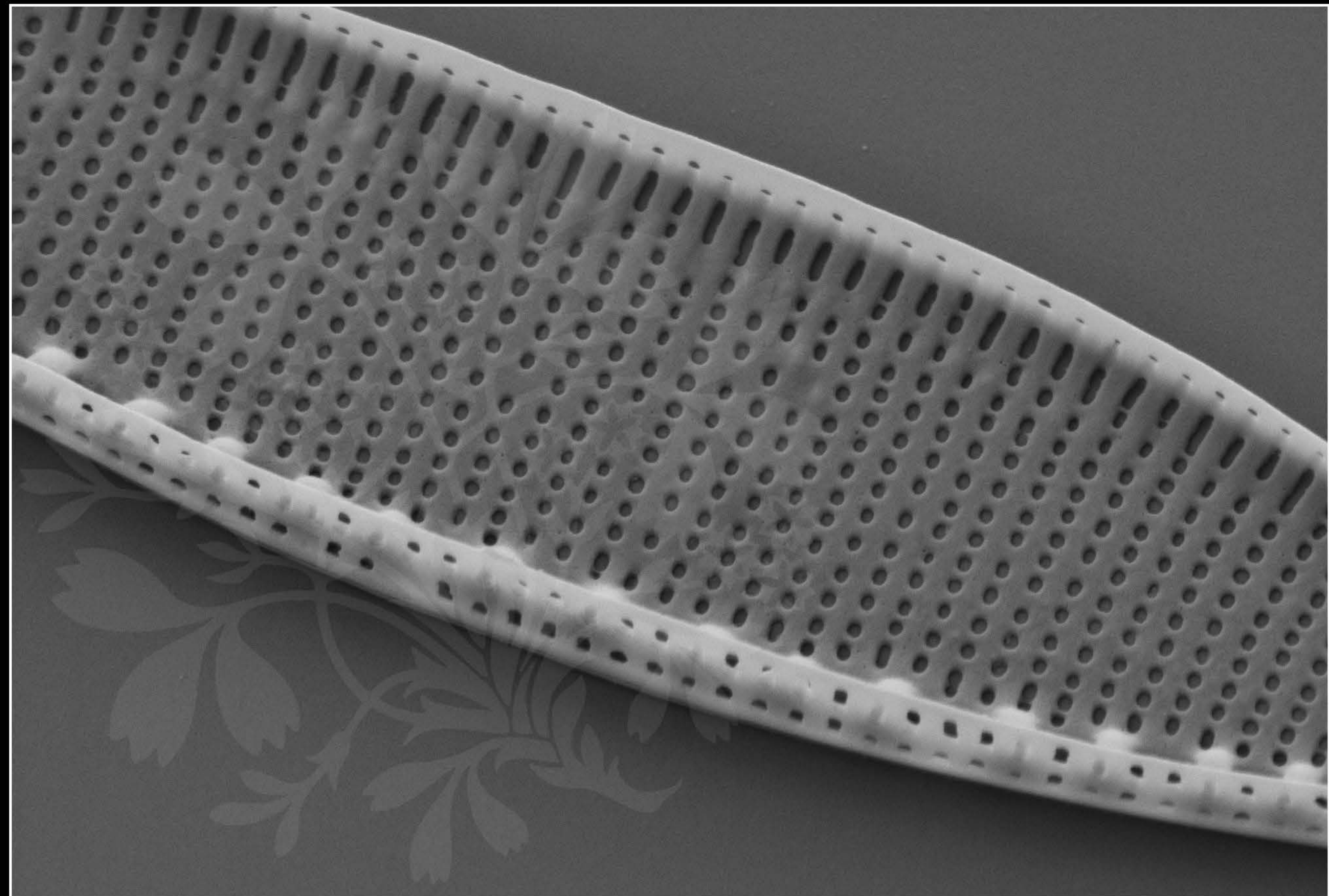
EHT = 4.00 kV

Signal A = SE2 Date :28 Sep 2017

WD = 5.2 mm

File Name = TCC896_11.tif





200 nm
└─┘

Mag = 30.00 K X

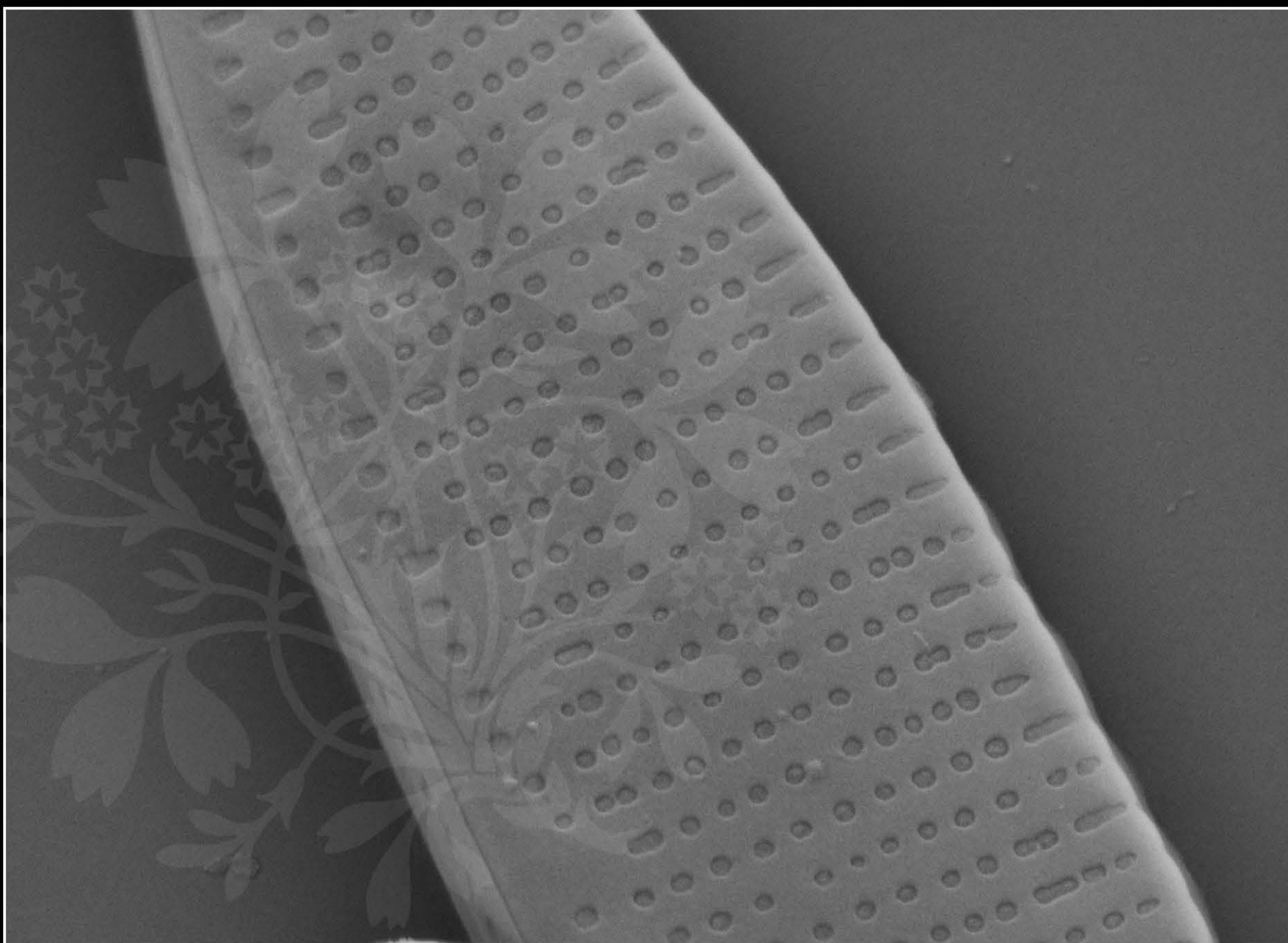
EHT = 4.00 kV

Signal A = SE2 Date :28 Sep 2017

WD = 5.2 mm

File Name = TCC896_12.tif





200 nm
└───┘

Mag = 40.00 K X

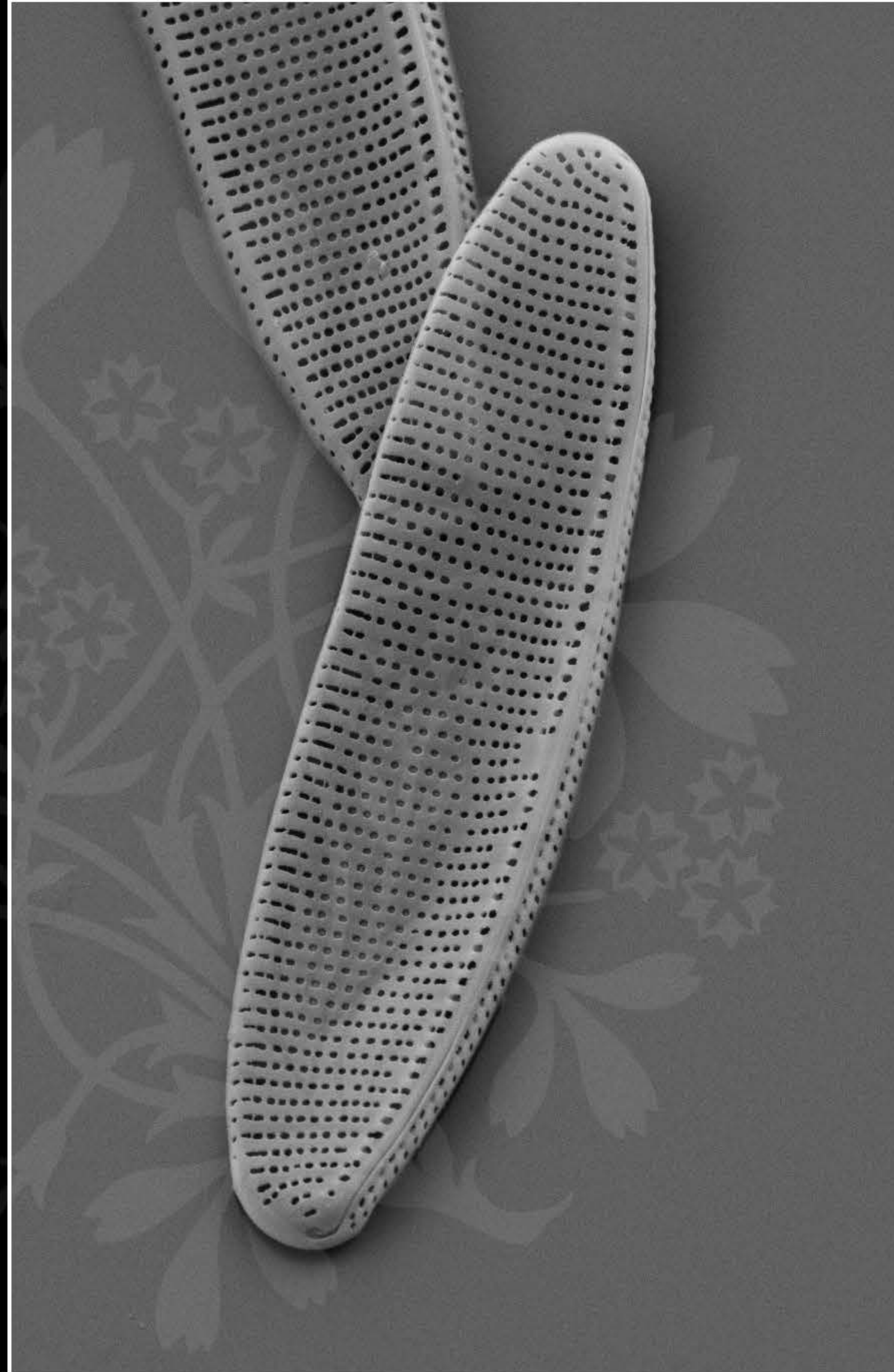
EHT = 4.00 kV

Signal A = SE2 Date :28 Sep 2017

WD = 5.2 mm

File Name = TCC896_13.tif





1 μm

Mag = 10.00 K X

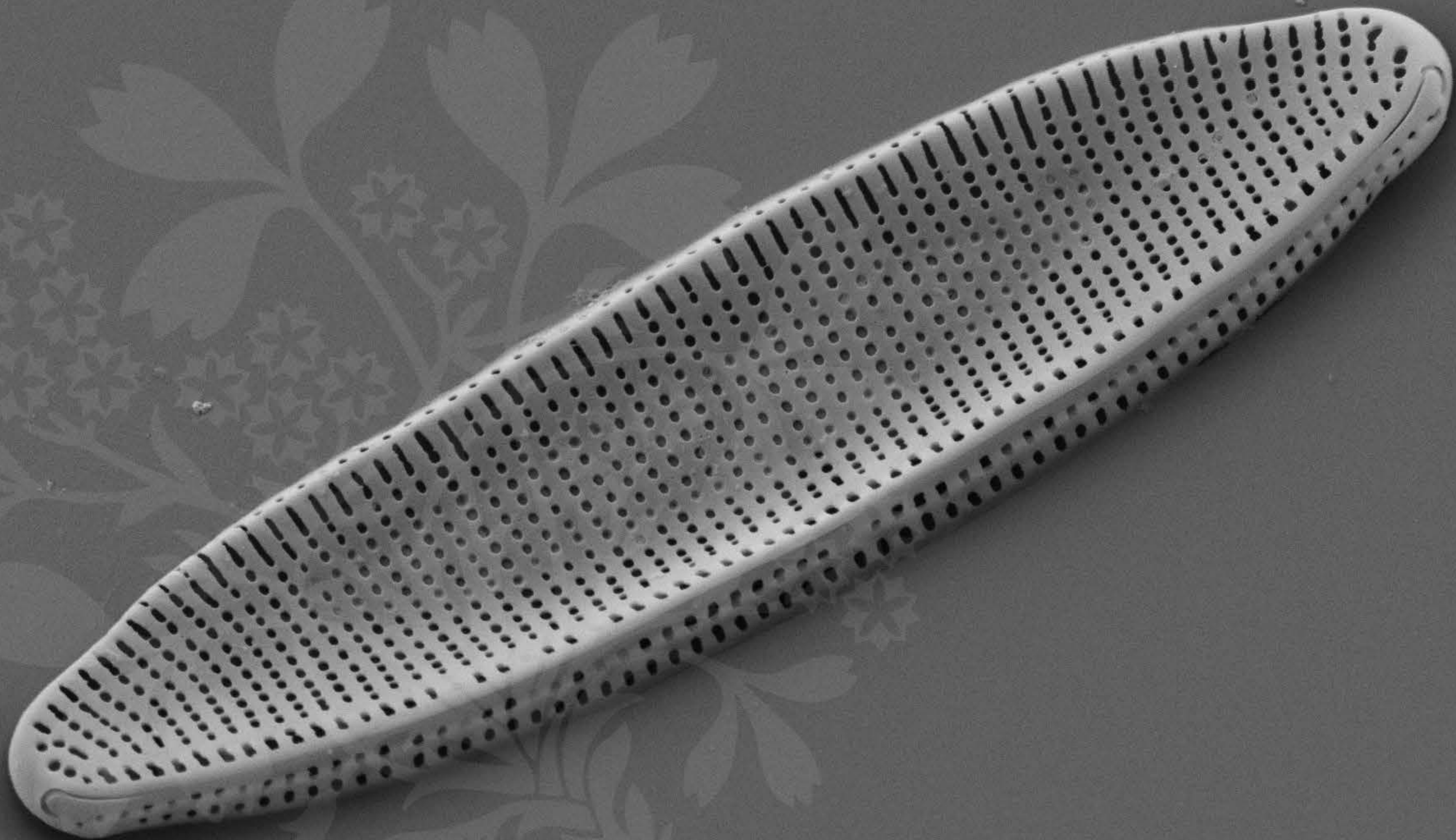
EHT = 4.00 kV

Signal A = SE2 Date :28 Sep 2017

WD = 5.2 mm

File Name = TCC896_14.tif





1 μm

Mag = 16.00 K X

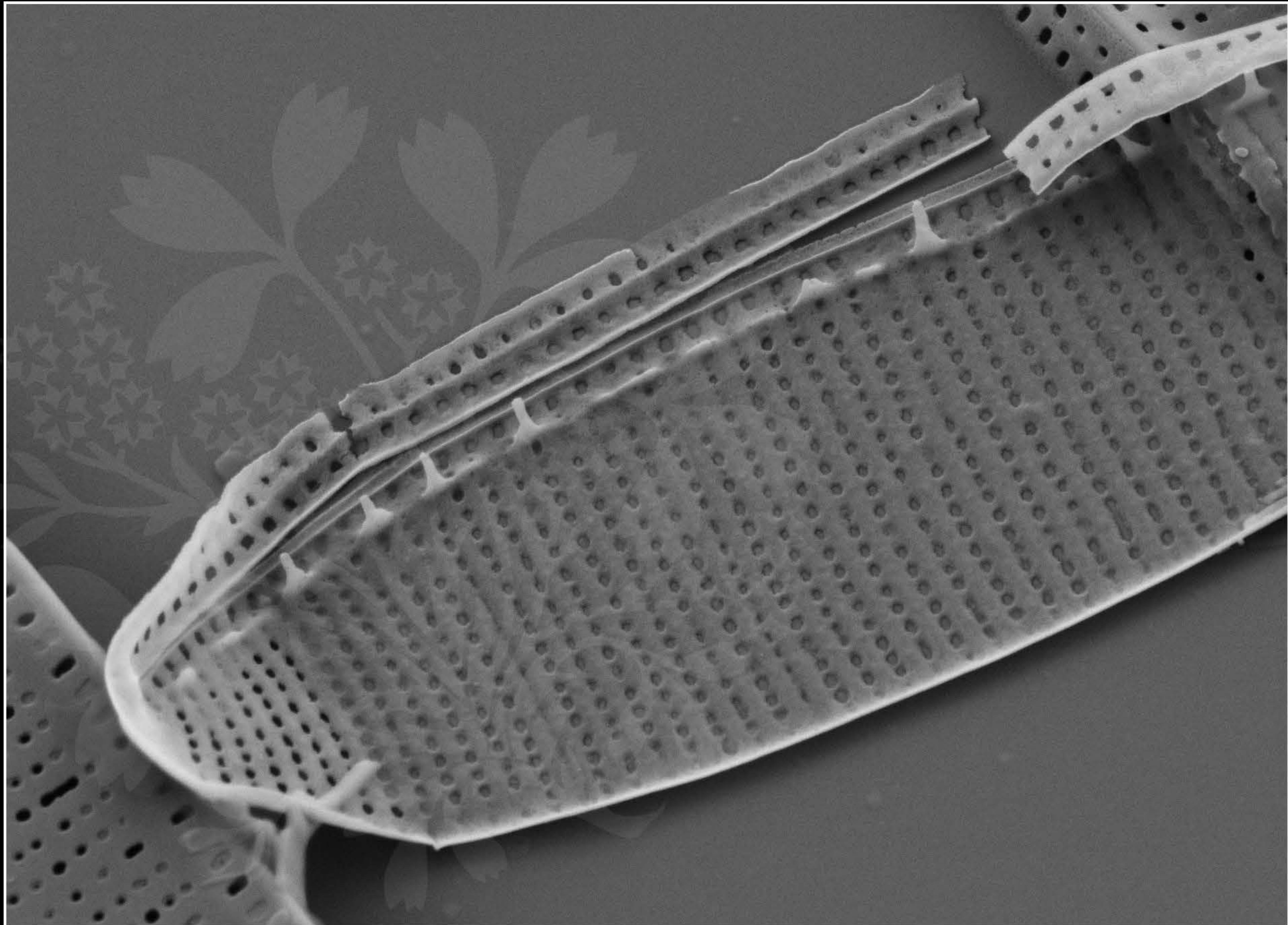
EHT = 4.00 kV

Signal A = SE2 Date :28 Sep 2017

WD = 5.2 mm

File Name = TCC896_15.tif





300 nm
└───┘

Mag = 25.00 K X

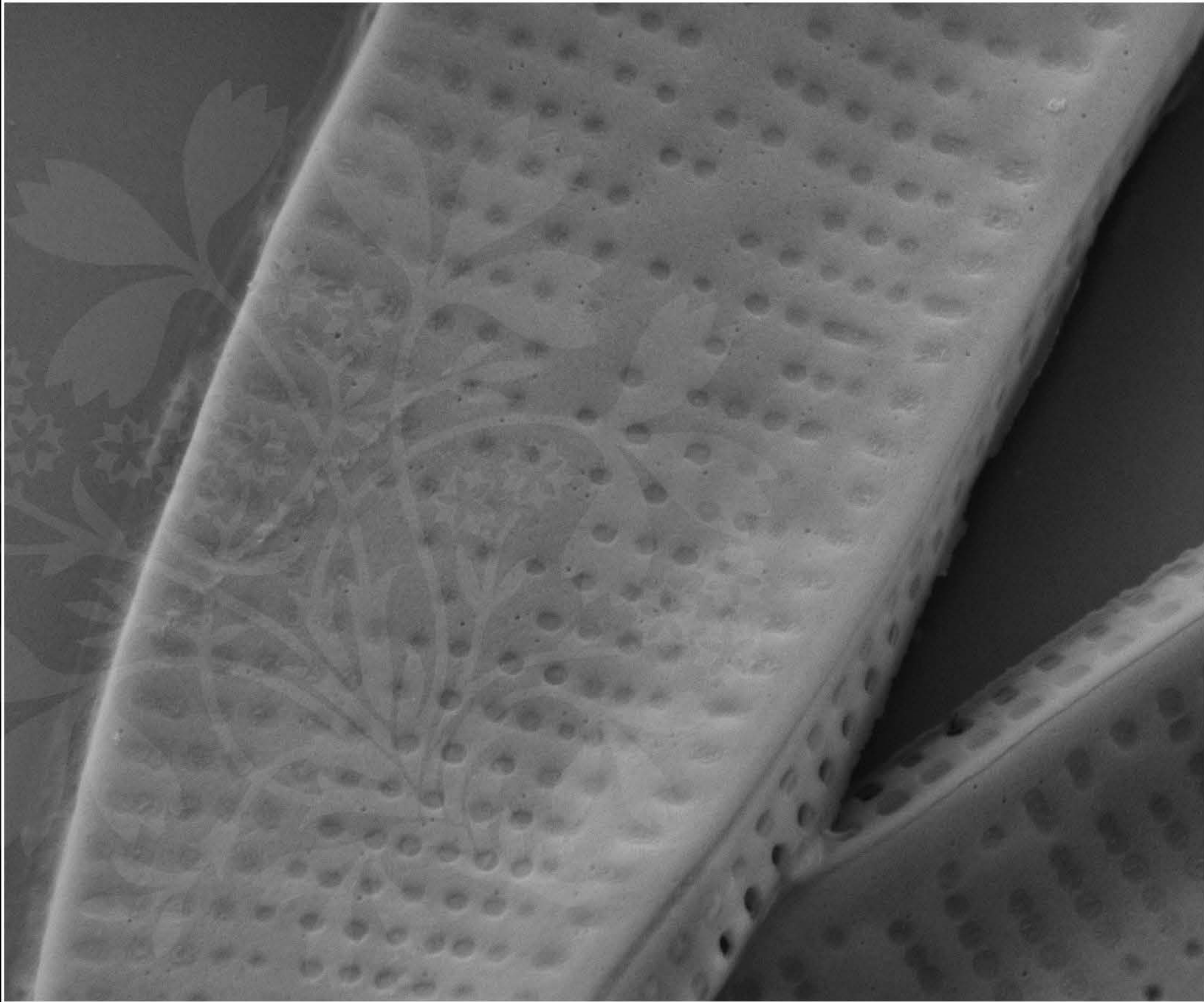
EHT = 4.00 kV

Signal A = SE2 Date :28 Sep 2017

WD = 5.2 mm

File Name = TCC896_16.tif





200 nm
└───┘

Mag = 40.00 K X

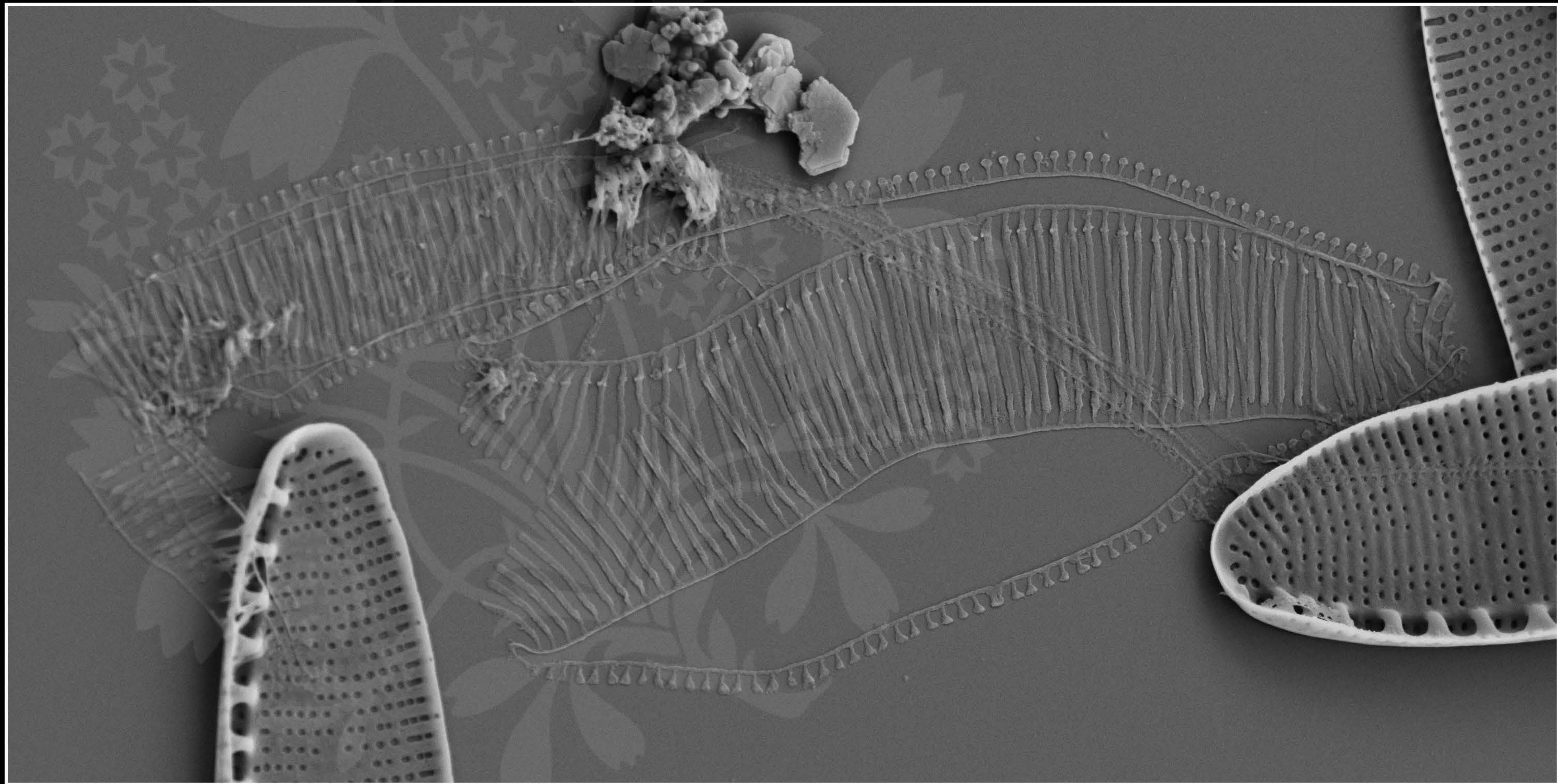
EHT = 4.00 kV

Signal A = SE2 Date :28 Sep 2017

WD = 5.2 mm

File Name = TCC896_17.tif





1 μm

Mag = 12.00 K X

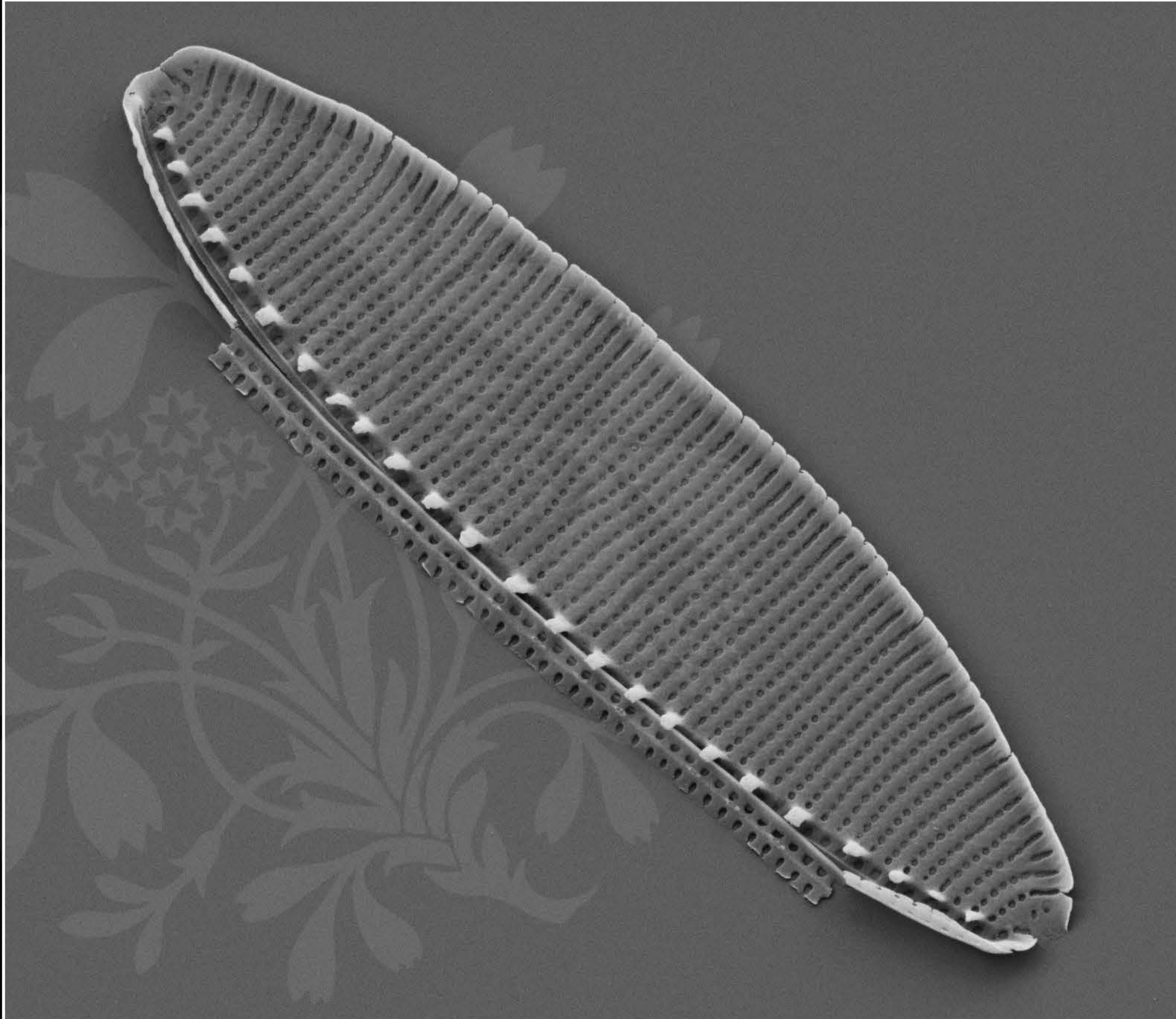
EHT = 4.00 kV

Signal A = SE2 Date :28 Sep 2017

WD = 5.2 mm

File Name = TCC896_18.tif





1 μm

Mag = 14.00 K X

EHT = 4.00 kV

Signal A = SE2 Date :28 Sep 2017

WD = 5.2 mm

File Name = TCC896_19.tif

